



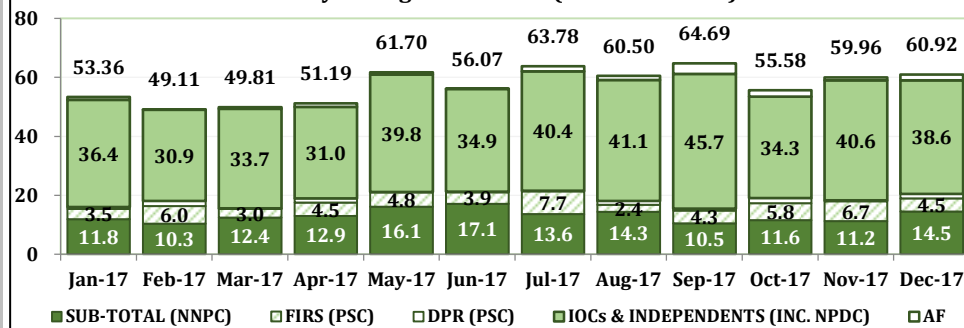
Crude Oil & Condensate Lifting and utilization (Volumes)

LIFTING MONTH	NIGERIAN GOVERNMENT					SUB-TOTAL GOVERNMENT LIFTING	IOCs & INDEPENDENTS (INC. NPDC)	AF	GRAND TOTAL
	FIRS (PSC)	DPR (PSC)	NNPC		SUB-TOTAL (NNPC)				
			FEDERATION EXPORT	DOMESTIC					
Barrels	Barrels	Barrels	Barrels	Barrels	Barrels	Barrels	Barrels	Barrels	
Jan-17	3,532,322	582,000	2,846,590	8,993,048	11,839,638	15,953,960	36,399,715	1,008,000	53,361,675
Feb-17	5,988,451	1,690,000	4,630,126	5,693,902	10,324,028	18,002,479	30,948,039	159,000	49,109,518
Mar-17	3,021,435	141,200	1,428,409	10,927,538	12,355,947	15,518,582	33,735,943	558,000	49,812,525
Apr-17	4,546,069	1,414,539	2,620,933	10,297,662	12,918,595	18,879,203	31,043,855	1,268,126	51,191,184
May-17	4,842,786	140,000	3,478,582	12,607,544	16,086,126	21,068,912	39,840,375	791,000	61,700,287
Jun-17	3,870,267	190,000	7,601,969	9,503,590	17,105,559	21,165,826	34,876,868	26,000	56,068,694
Jul-17	7,746,234	262,700	6,349,550	7,206,304	13,555,854	21,564,788	40,403,794	1,806,790	63,775,372
Aug-17	2,448,119	1,267,054	4,599,572	9,706,674	14,306,246	18,021,419	41,079,311	1,400,000	60,500,730
Sep-17	4,302,468	668,519	4,008,861	6,452,172	10,461,033	15,432,020	45,698,160	3,559,312	64,689,492
Oct-17	5,773,143	1,720,306	2,561,037	9,002,509	11,563,546	19,056,995	34,338,071	2,183,483	55,578,549
Nov-17	6,737,220	350,000	5,424,555	5,766,199	11,190,754	18,277,974	40,649,805	1,027,800	59,955,579
Dec-17	4,481,518	1,472,942	4,695,969	9,767,455	14,463,424	20,417,884	38,576,868	1,924,476	60,919,228
TOTAL	57,290,032	9,899,260	50,246,153	105,924,597	156,170,750	223,360,042	447,590,804	15,711,987	686,662,833

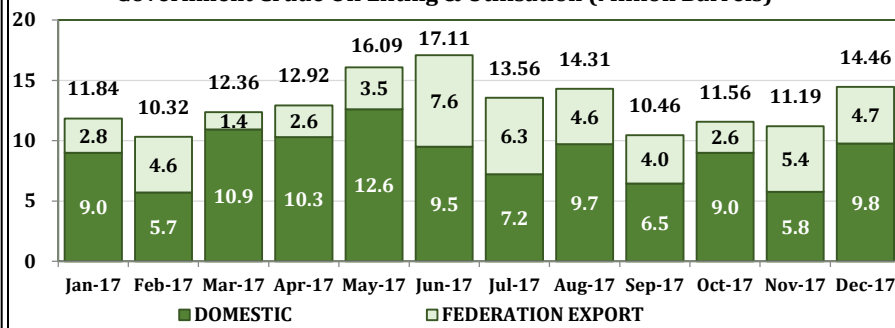
Crude Oil & Condensate Lifting and utilization (Values)

LIFTING MONTH	NIGERIAN GOVERNMENT					SUB-TOTAL GOVERNMENT LIFTING	IOCs & INDEPENDENTS (INC. NPDC)	AF	GRAND TOTAL
	FIRS (PSC)	DPR (PSC)	NNPC		SUB-TOTAL (NNPC)				
			FEDERATION EXPORT	DOMESTIC					
USD	USD	USD	USD	USD	USD	USD	USD	USD	
Jan-17	196,919,320	32,021,314	157,651,000	498,003,069	655,654,069	884,594,703	2,015,903,749	55,211,751	2,955,710,204
Feb-17	328,632,888	92,396,380	255,498,806	311,957,345	567,456,151	988,485,419	1,707,769,296	8,769,164	2,705,023,879
Mar-17	154,659,432	6,735,341	71,814,310	566,554,156	638,368,465	799,763,238	1,696,099,267	27,917,668	2,523,780,173
Apr-17	234,097,527	69,623,049	133,810,412	539,603,629	673,414,042	977,134,617	1,584,928,361	66,976,104	2,629,039,082
May-17	243,548,132	6,705,580	175,461,727	639,112,108	814,573,835	1,064,827,547	2,009,572,008	40,549,307	3,114,948,862
Jun-17	176,786,949	1,203,280	351,903,874	443,202,067	795,105,941	973,096,170	1,614,490,268	1,203,280	2,588,789,717
Jul-17	373,531,605	12,005,149	308,964,905	349,549,762	658,514,667	1,044,051,421	1,966,021,901	90,364,828	3,100,438,149
Aug-17	127,587,422	67,677,169	239,479,415	502,248,529	741,727,944	936,992,535	2,138,818,432	70,450,720	3,146,261,687
Sep-17	244,498,741	37,598,234	227,828,174	369,823,011	597,651,185	879,748,160	2,597,078,907	207,616,209	3,684,443,276
Oct-17	336,994,305	100,575,925	147,799,226	530,416,321	678,215,547	1,115,785,776	1,981,673,948	131,625,038	3,229,084,763
Nov-17	426,704,785	21,378,000	342,184,908	368,796,216	710,981,124	1,159,063,909	2,564,219,517	65,225,673	3,788,509,099
Dec-17	299,603,014	98,248,681	308,608,053	637,170,711	945,778,763	1,343,630,458	2,535,181,154	130,319,826	4,009,131,438
TOTAL	3,143,564,119	546,168,102	2,721,004,809	5,756,436,924	8,477,441,734	12,167,173,955	24,411,756,806	896,229,568	37,475,160,328

Monthly Lifting Entitlement (Million Barrels)



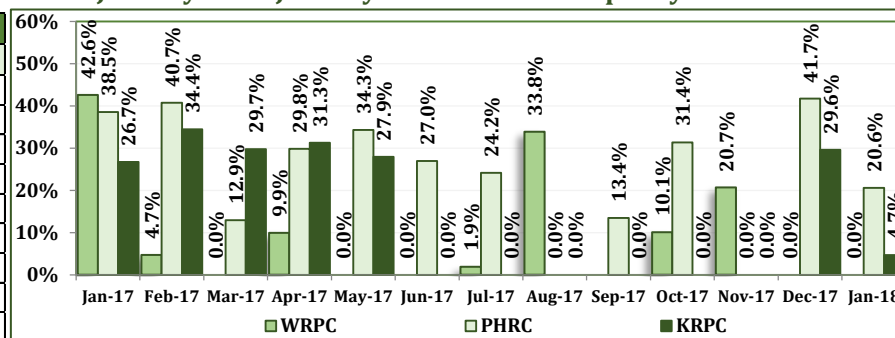
Government Crude Oil Lifting & Utilisation (Million Barrels)



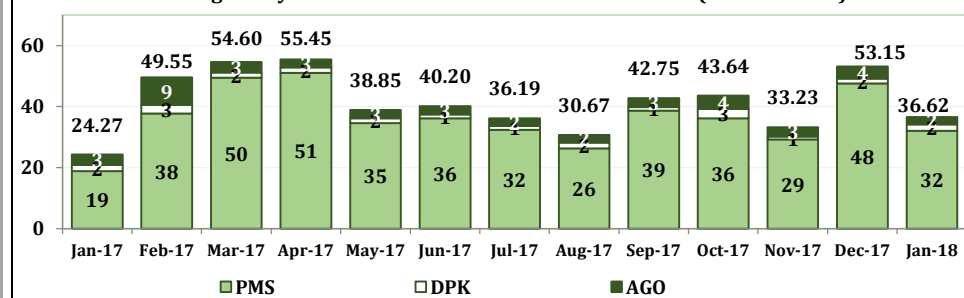
Refineries Operational Performance for the month of January, 2018

Operational Parameters	Units	WRPC		PHRC		KRPC		Consolidated	
		Dec-17	Jan-17	Dec-17	Jan-17	Dec-17	Jan-17	Dec-17	Jan-17
Total Crude Available	MT	195,837	196,766	487,449	360,740	237,695	100,688	920,981	658,194
Closing Stock	MT	195,837	196,766	117,324	177,718	100,088	78,833	413,249	453,317
Crude Processed	MT	0	0	370125	183022	137607	21855	507732	204877
(i) Finished Products	MT	24,343	8,037	229,579	138,773	46,342	7,866	300,264	154,676
(ii) Intermediate Products	MT	-25697	-9395	116,439	31,019	60,812	8,037	151,554	29,661
Plant Capacity	kpd	125	125	210	210	110	110	445	445
Capacity Utilization	%	0.00%	0.00%	41.69%	20.61%	29.59%	4.70%	26.99%	10.89%
Losses	%	0.00%	0.00%	1.84%	1.67%	1.18%	0.87%	1.66%	1.58%
Plant Consumption	%	0.00%	0.00%	4.67%	5.56%	20.95%	26.36%	9.35%	8.44%

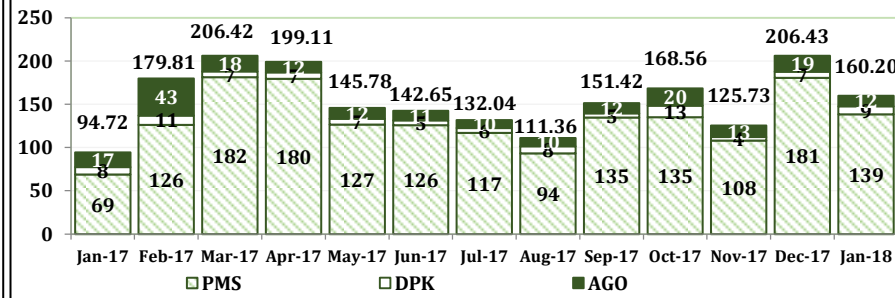
January '17 - January '18 Refineries Capacity Utilisation



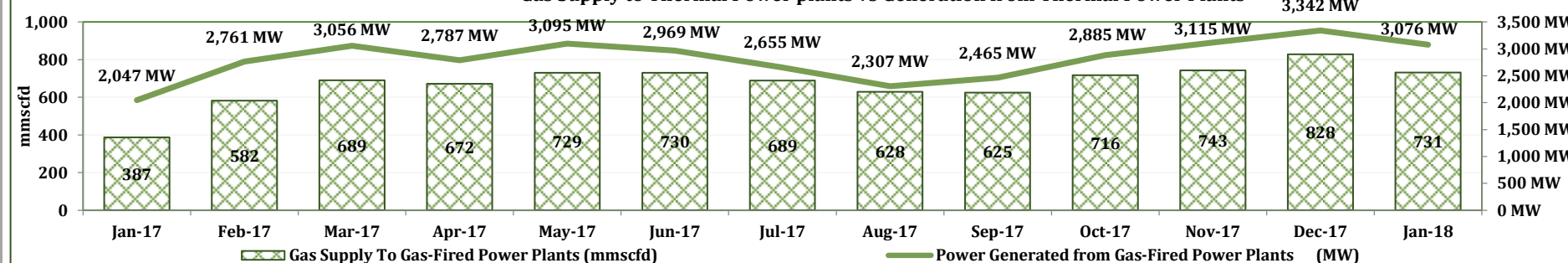
Average Daily PPMC Product Distribution Sales Volume (Million Litres)



Sales Revenue From PPMC Product Distribution (Billion Naira)



Gas Supply to Thermal Power plants vs Generation from Thermal Power Plants



Generation

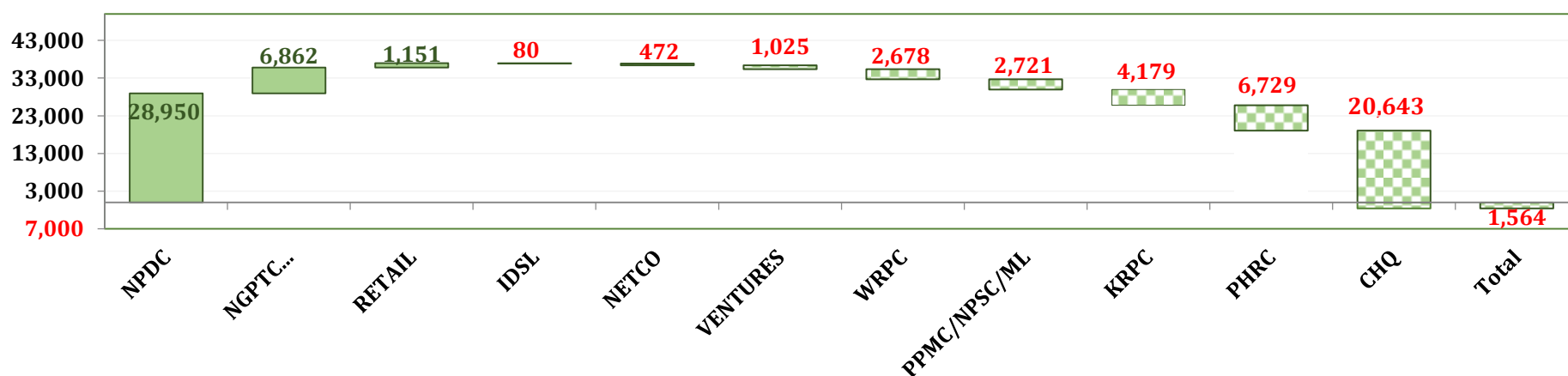
Disclaimer: All information contained in this report are unaudited Full Report Available on www.nnpcgroup.com



NNPC Group Financial Report by Entity

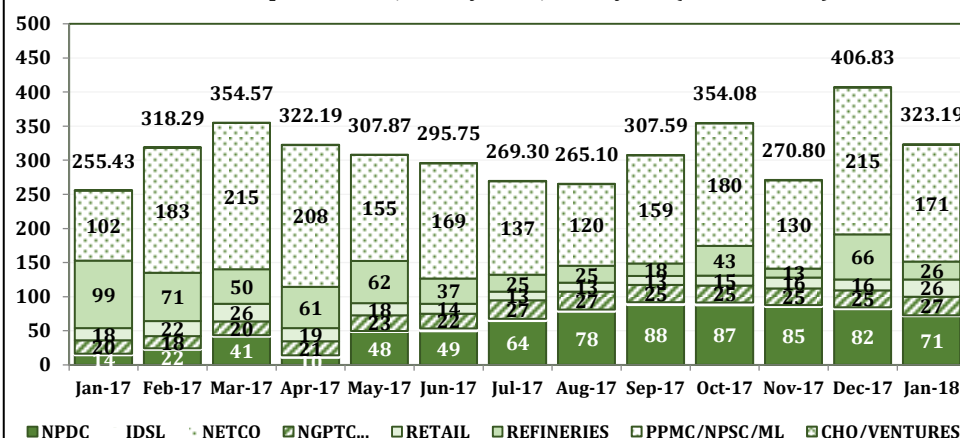
SBU/CSU	MONTHLY BUDGET (=N= MILLION)			(=N= MILLION)						2018 YTD (=N= MILLION)					
				DECEMBER, 2017			JANUARY, 2018			BUDGET			ACTUAL		
	Revenue	Expense	Surplus/(Deficit)	Revenue	Expense	Surplus/(Deficit)	Revenue	Expense	Surplus/(Deficit)	Revenue	Expense	Surplus/(Deficit)	Revenue	Expense	Surplus/(Deficit)
NPDC	71,406	24,255	47,151	81,710	58,329	23,380	71,406	42,456	28,950	71,406	24,255	47,151	71,406	42,456	28,950
IDSL	2,405	1,538	867	832	831	1	665	745	(80)	2,405	1,538	867	665	745	(80)
NETCO	1,250	1,136	114	1,759	1,527	232	651	1,122	(472)	1,250	1,136	114	651	1,122	(472)
NGNGPTC/...	24,852	15,610	9,242	24,718	16,354	8,365	27,086	20,224	6,862	24,852	15,610	9,242	27,086	20,224	6,862
Sub-Total	99,913	42,539	57,373	109,019	77,041	31,978	99,808	64,548	35,260	99,913	42,539	57,373	99,808	64,548	35,260
KRPC	8,924	9,307	(384)	15,477	19,880	(4,403)	(903)	3,276	(4,179)	8,924	9,307	(384)	(903)	3,276	(4,179)
PHRC	37,830	30,685	7,145	50,715	55,662	(4,947)	27,069	33,799	(6,729)	37,830	30,685	7,145	27,069	33,799	(6,729)
WRPC	26,245	22,098	4,147	36	1,781	(1,745)	9	2,687	(2,678)	26,245	22,098	4,147	9	2,687	(2,678)
Sub-Total	72,999	62,091	10,908	66,228	77,323	(11,095)	26,176	39,762	(13,586)	72,999	62,091	10,908	26,176	39,762	(13,586)
RETAIL	26,502	25,115	1,387	16,006	16,446	(440)	25,542	24,391	1,151	26,502	25,115	1,387	25,542	24,391	1,151
PPMC/NPSC..	166,378	168,890	(2,512)	215,265	226,325	(11,060)	170,978	173,698	(2,721)	166,378	168,890	(2,512)	170,978	173,698	(2,721)
Sub-Total	192,880	194,005	(1,125)	231,270	242,770	(11,500)	196,520	198,089	(1,569)	192,880	194,005	(1,125)	196,520	198,089	(1,569)
CHQ	476	16,165	(15,689)	243	14,115	(13,871)	682	21,325	(20,643)	476	16,165	(15,689)	682	21,325	(20,643)
VENTURES	1,467	2,839	(1,371)	69	2,393	(2,325)	8	1,033	(1,025)	1,467	2,839	(1,371)	8	1,033	(1,025)
Sub-Total	1,943	19,004	(17,061)	312	16,508	(16,196)	689	22,358	(21,669)	1,943	19,004	(17,061)	689	22,358	(21,669)
Grand Total	367,735	317,638	50,096	406,830	413,643	(6,813)	323,193	324,757	(1,564)	367,735	317,638	50,096	323,193	324,757	(1,564)

NNPC Group Surplus/Deficit in YTD 2018 (Million Naira)



- NNPC ramp-up PMS supply from normal daily supply of 35million litres to about 60million litres per day to content the acute PMS supply in the country.
- NNPC is inching closer to choosing financial Advisors for its Refineries. The project promised to deliver 90 percent capacity utilization per stream day before the end of 2019.
- The Corporation is exploring the possibility of building power generating plant with combined capacity of 3,600MW, Abuja (1,350MW), Kaduna (900MW) and Kano (1350MW) states following successful AKK construction contract approval.

NNPC Group Revenue: January '17 - January '18 (Billion Naira)



An average of 8,169mmscfd of gas was produced in the month of January 2018 out of which 14% was sent to the domestic sector, 43% was exported, 31% was reinjected or used as fuel while the balance 13% was flared.



An average of 731 mmscfd of gas sent to over 20 domestic thermal power plants in the month of January 2018 generating a thermal power output of 3,076 MW to the National grid representing 76.7% of the total national Power generation.

An additional 365 mmscfd of gas sent to the domestic sector was able to power over 50 industrial companies in the Nigerian Economy for the month of January 2018

National Gas Production & Utilization – January 2018