

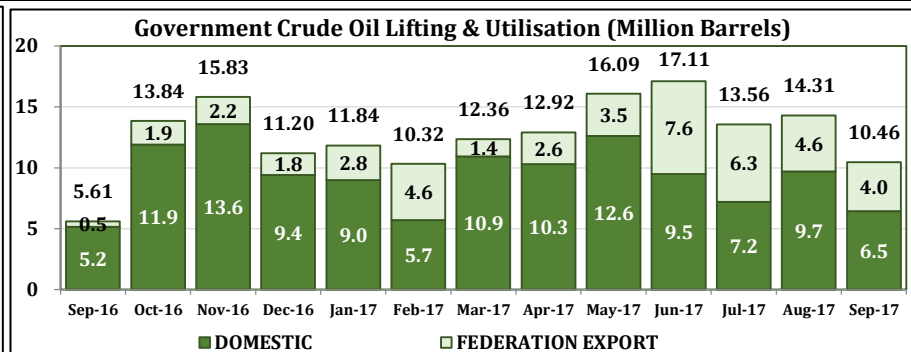
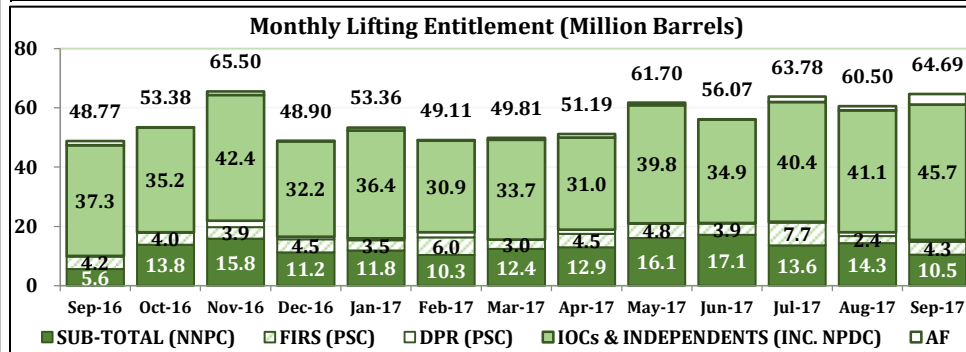


## Crude Oil & Condensate Lifting and utilization (Volumes)

LIFTING MONTH	NIGERIAN GOVERNMENT					SUB-TOTAL GOVERNMENT LIFTING	IOCs & INDEPENDENTS (INC. NPDC)	AF	GRAND TOTAL
	FIRS (PSC)	DPR (PSC)	NNPC		SUB-TOTAL (NNPC)				
			FEDERATION EXPORT	DOMESTIC					
Barrels	Barrels	Barrels	Barrels	Barrels	Barrels	Barrels	Barrels	Barrels	
Sep-16	4,209,286	232,000	452,661	5,159,028	5,611,689	10,052,975	37,279,027	1,436,055	48,768,057
Oct-16	4,016,873	187,489	1,943,053	11,901,838	13,844,891	18,049,253	35,207,694	128,000	53,384,947
Nov-16	3,921,311	2,169,768	2,243,402	13,584,651	15,828,053	21,919,132	42,390,053	1,194,000	65,503,185
Dec-16	4,494,376	770,000	1,777,480	9,422,823	11,200,303	16,464,679	32,159,329	280,000	48,904,008
Jan-17	3,532,322	582,000	2,846,590	8,993,048	11,839,638	15,953,960	36,399,715	1,008,000	53,361,675
Feb-17	5,988,451	1,690,000	4,630,126	5,693,902	10,324,028	18,002,479	30,948,039	159,000	49,109,518
Mar-17	3,021,435	141,200	1,428,409	10,927,538	12,355,947	15,518,582	33,735,943	558,000	49,812,525
Apr-17	4,546,069	1,414,539	2,620,933	10,297,662	12,918,595	18,879,203	31,043,855	1,268,126	51,191,184
May-17	4,842,786	140,000	3,478,582	12,607,544	16,086,126	21,068,912	39,840,375	791,000	61,700,287
Jun-17	3,870,267	190,000	7,601,969	9,503,590	17,105,559	21,165,826	34,876,868	26,000	56,068,694
Jul-17	7,746,234	262,700	6,349,550	7,206,304	13,555,854	21,564,788	40,403,794	1,806,790	63,775,372
Aug-17	2,448,119	1,267,054	4,599,572	9,706,674	14,306,246	18,021,419	41,079,311	1,400,000	60,500,730
Sep-17	4,302,468	668,519	4,008,861	6,452,172	10,461,033	15,432,020	45,698,160	3,559,312	64,689,492
<b>TOTAL</b>	<b>56,939,997</b>	<b>9,715,269</b>	<b>43,981,188</b>	<b>121,456,774</b>	<b>165,437,962</b>	<b>232,093,228</b>	<b>481,062,163</b>	<b>13,614,283</b>	<b>726,769,674</b>

## Crude Oil & Condensate Lifting and utilization (Values)

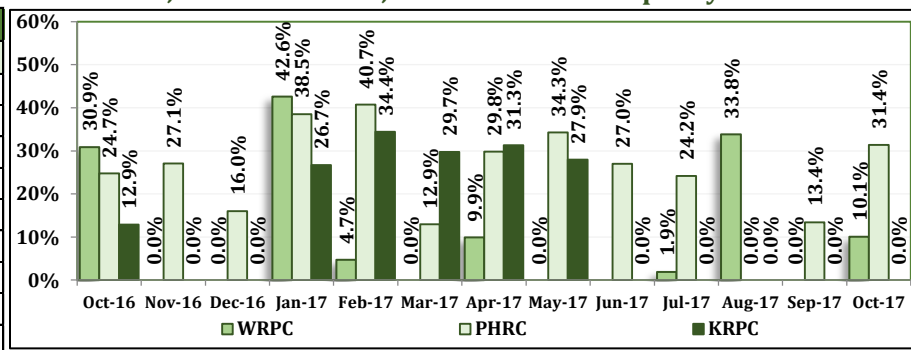
LIFTING MONTH	NIGERIAN GOVERNMENT					SUB-TOTAL GOVERNMENT LIFTING	IOCs & INDEPENDENTS (INC. NPDC)	AF	GRAND TOTAL
	FIRS (PSC)	DPR (PSC)	NNPC		SUB-TOTAL (NNPC)				
			FEDERATION EXPORT	DOMESTIC					
USD	USD	USD	USD	USD	USD	USD	USD	USD	
Sep-16	203,610,332	23,450,384	21,401,359	245,813,790	267,215,149	494,275,865	1,762,515,118	67,814,400	2,324,605,382
Oct-16	203,824,153	9,306,579	96,311,189	593,575,938	689,887,127	903,017,859	1,847,807,246	6,441,196	2,757,266,301
Nov-16	177,943,887	93,357,159	100,367,748	629,685,928	730,053,676	1,001,354,722	1,896,492,089	57,884,752	2,955,731,563
Dec-16	240,101,215	41,015,570	93,965,963	509,663,435	603,629,397	884,746,182	1,700,093,566	15,267,920	2,600,107,668
Jan-17	196,919,320	32,021,314	157,651,000	498,003,069	655,654,069	884,594,703	2,015,903,749	55,211,751	2,955,710,204
Feb-17	328,632,888	92,396,380	255,498,806	311,957,345	567,456,151	988,485,419	1,707,769,296	8,769,164	2,705,023,879
Mar-17	154,659,432	6,735,341	71,814,310	566,554,156	638,368,465	799,763,238	1,696,099,267	27,917,668	2,523,780,173
Apr-17	234,097,527	69,623,049	133,810,412	539,603,629	673,414,042	977,134,617	1,584,928,361	66,976,104	2,629,039,082
May-17	243,548,132	6,705,580	175,461,727	639,112,108	814,573,835	1,064,827,547	2,009,572,008	40,549,307	3,114,948,862
Jun-17	176,786,949	1,203,280	351,903,874	443,202,067	795,105,941	973,096,170	1,614,490,268	1,203,280	2,588,789,717
Jul-17	373,531,605	12,005,149	308,964,905	349,549,762	658,514,667	1,044,051,421	1,966,021,901	90,364,828	3,100,438,149
Aug-17	127,587,422	67,677,169	239,479,415	502,248,529	741,727,944	936,992,535	2,138,818,432	70,450,720	3,146,261,687
Sep-17	244,498,741	37,598,234	227,828,174	369,823,011	597,651,185	879,748,160	2,597,078,907	207,616,209	3,684,443,276
<b>TOTAL</b>	<b>2,905,741,602</b>	<b>493,095,188</b>	<b>2,234,458,882</b>	<b>6,198,792,767</b>	<b>8,433,251,648</b>	<b>11,832,088,439</b>	<b>24,537,590,205</b>	<b>716,467,299</b>	<b>37,086,145,942</b>



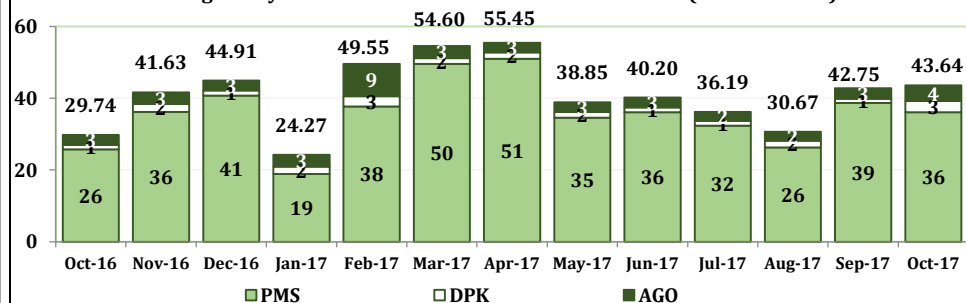
## Refineries Operational Performance for the month of October, 2017

Operational Parameters	Units	WRPC		PHRC		KRPC		Consolidated	
		Sep-17	Oct-17	Sep-17	Oct-17	Sep-17	Oct-17	Sep-17	Oct-17
Total Crude Available	MT	181,915	226,368	286,151	433,606	235,795	235,795	703,861	895,769
Closing Stock	MT	181,915	173,163	170,710	155,106	235,795	235,795	588,420	564,064
Crude Processed	MT	0	53205	115441	278500	0	0	115441	331705
(i) Finished Products	MT	28,481	27,308	109,503	200,914	0	0	137,984	228,222
(ii) Intermediate Products	MT	-37525	17451	-4,036	63,415	-6,276	-8,947	-47,837	71,919
Plant Capacity	kpd	125	125	210	210	110	110	445	445
Capacity Utilization	%	0.00%	10.07%	13.44%	31.37%	0.00%	0.00%	6.34%	17.63%
Losses	%	0.00%	6.40%	1.12%	1.01%	0.00%	0.00%	4.71%	1.87%
Plant Consumption	%	0.00%	9.47%	7.52%	4.08%	0.00%	0.00%	17.20%	7.64%

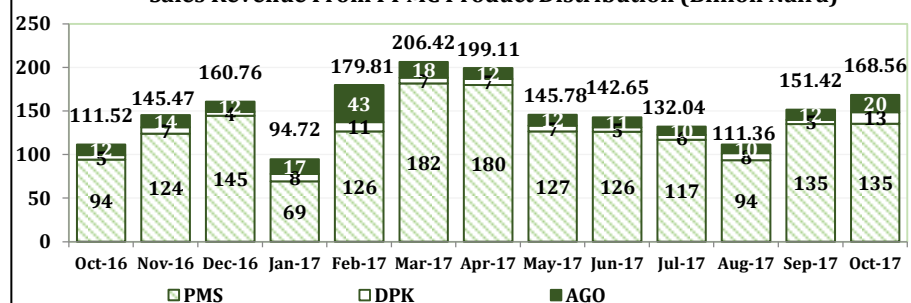
## October, 2016- October, 2017 Refineries Capacity Utilisation



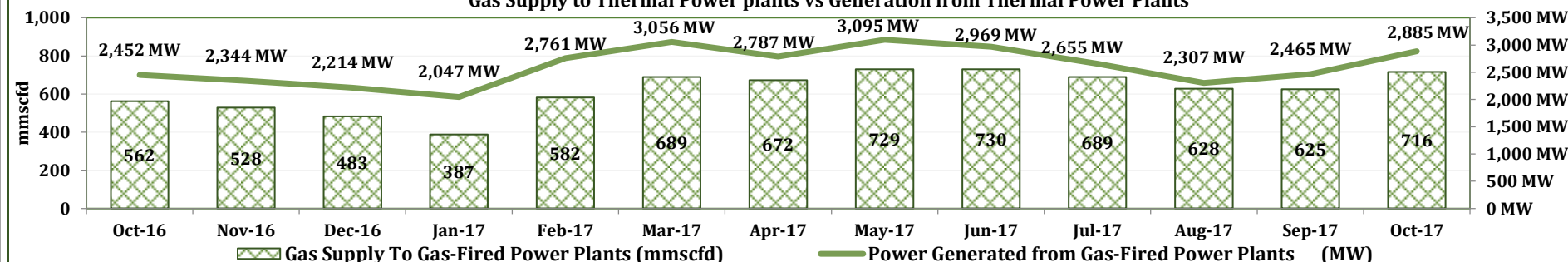
## Average Daily PPMC Product Distribution Sales Volume (Million Litres)



## Sales Revenue From PPMC Product Distribution (Billion Naira)



## Gas Supply to Thermal Power plants vs Generation from Thermal Power Plants



Up-stream

Crude Oil Production & Lifting

Midstream

REFINERIES

Downstream

Products Gas2Power



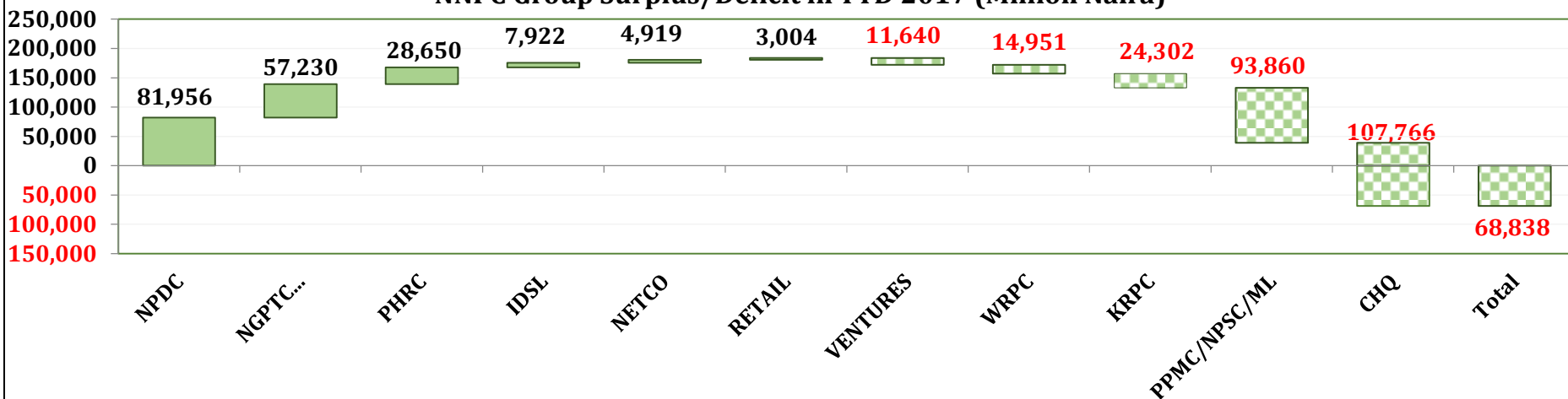
## NNPC Group Financial Report by Entity

SBU/CSU	MONTHLY BUDGET (=N= MILLION)			(=N= MILLION)						2017 YTD (=N= MILLION)					
				SEPTEMBER, 2017			OCTOBER, 2017			BUDGET			ACTUAL		
	Revenue	Expense	Surplus/(Deficit)	Revenue	Expense	Surplus/(Deficit)	Revenue	Expense	Surplus/(Deficit)	Revenue	Expense	Surplus/(Deficit)	Revenue	Expense	Surplus/(Deficit)
NPDC	71,406	24,255	47,151	87,667	76,953	10,714	87,375	80,143	7,232	714,065	242,550	471,515	501,634	419,678	81,956
IDSL	2,405	1,538	867	2,369	1,107	1,262	1,342	670	672	24,046	15,378	8,667	16,571	8,650	7,922
NETCO	1,250	1,136	114	1,743	1,583	160	2,703	2,106	597	12,498	11,363	1,135	14,608	9,689	4,919
NGNGPTC/...	24,852	15,610	9,242	25,315	17,035	8,280	24,733	16,307	8,425	248,520	156,103	92,417	226,091	168,861	57,230
Sub-Total	99,913	42,539	57,373	117,094	96,678	20,416	116,153	99,227	16,926	999,128	425,395	573,734	758,904	606,878	152,026
KRPC	8,924	9,307	(384)	(627)	3,152	(3,780)	(854)	3,085	(3,939)	89,235	93,075	(3,839)	94,212	118,514	(24,302)
PHRC	37,830	30,685	7,145	17,570	16,174	1,397	37,540	38,440	(900)	378,304	306,850	71,455	321,682	293,032	28,650
WRPC	26,245	22,098	4,147	1,465	2,600	(1,136)	6,582	9,505	(2,923)	262,450	220,983	41,467	76,078	91,029	(14,951)
Sub-Total	72,999	62,091	10,908	18,408	21,926	(3,519)	43,268	51,030	(7,762)	729,990	620,908	109,082	491,972	502,575	(10,603)
RETAIL	26,502	25,115	1,387	13,237	13,593	(356)	14,812	14,840	(28)	265,021	251,147	13,874	171,640	168,637	3,004
PPMC/NPSC..	166,378	168,890	(2,512)	158,511	168,149	(9,638)	179,738	181,261	(1,522)	1,663,778	1,688,898	(25,120)	1,626,856	1,720,716	(93,860)
Sub-Total	192,880	194,005	(1,125)	171,747	181,742	(9,995)	194,551	196,100	(1,550)	1,928,799	1,940,045	(11,246)	1,798,497	1,889,353	(90,856)
CHQ	476	16,165	(15,689)	334	8,830	(8,496)	60	6,886	(6,826)	4,756	161,648	(156,892)	635	108,401	(107,766)
VENTURES	1,467	2,839	(1,371)	11	1,224	(1,213)	51	1,246	(1,195)	14,673	28,388	(13,715)	177	11,817	(11,640)
Sub-Total	1,943	19,004	(17,061)	344	10,054	(9,709)	111	8,132	(8,021)	19,429	190,036	(170,607)	812	120,218	(119,406)
Grand Total	367,735	317,638	50,096	307,593	310,400	(2,807)	354,082	354,490	(407)	3,677,346	3,176,384	500,962	3,050,185	3,119,023	(68,838)

Group

Financial Performance

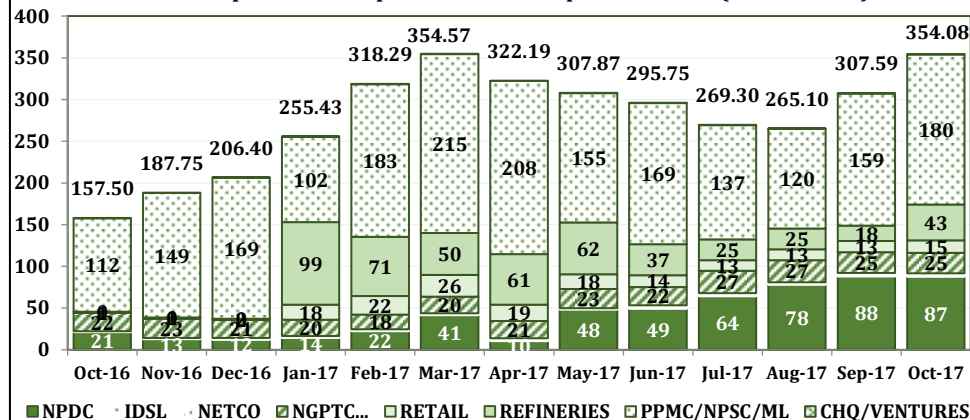
### NNPC Group Surplus/Deficit in YTD 2017 (Million Naira)



Change

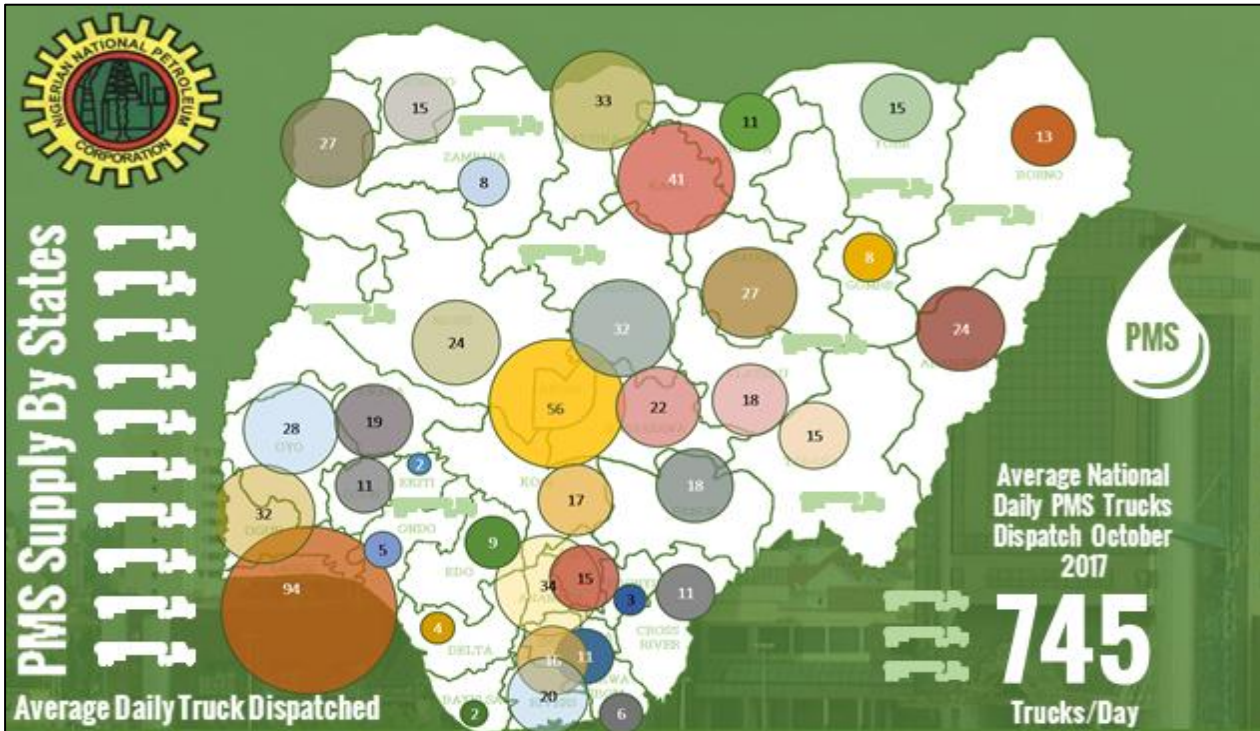
- The 27<sup>th</sup> edition indicates significant performance improvement relative to the August 2017 performance. The edition recorded 85% reduction in deficit (from ₦2.40Bn - ₦0.41Bn) which is majorly due to enhance performance of NGPTC/NGMC/GPIC and NPDC. Improved operational efficiency in PPMC has also contributed to this feat recorded during the month.
- The report also assures Nigerians of NNPC's commitments to efficient supply and distribution of white petroleum products, in particular PMS to prevent possible emergence of products scarcity in any part of the country usually created by panic buying during yuletide period.

### NNPC Group Revenue: September 2016 - September 2017 (Billion Naira)



Revenue

National PMS Distribution by State



### Key Highlights

- NNPC continued to ensure sufficient supply and effective distribution of PMS in the month of October 2017.
- A total of 23,110 Trucks of PMS was dispatched nationwide.
- About 1,119,790,227 liters of PMS product was sold by NNPC PPMC within this month.

**23,110** Trucks



Total PMS Trucks Dispatched: October 2017

October Average PMS Truck Supply

## National PMS Supply & Distribution – October 2017